

SILICONE ART MATERIALS™

rubber art • flexible and fun

dist. by Just Sculpt, LLC



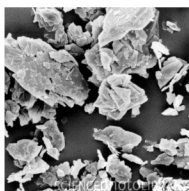
SILICONE FINISHING POWDER™

Polymeric Micro-Powder Blend

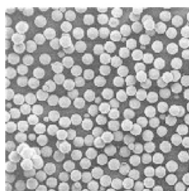
- Skin-Safe Microspheres of Silicone, Acrylic, Silica and Nylon.
- TRANSPARENT - leaves more detail show through.
- Helps keep silicone clean.
- Ball bearing effect provides 'dry slip' to rubber surfaces.

Control shine and provide dry slip on: Skin, Silicone, Gel Filled Appliances, PAX Paint, RMG, Latex Foam, All Rubbers, Gelatin, Pros-Aide Transfers, Bald Caps, Creatures, Costumes, Props.

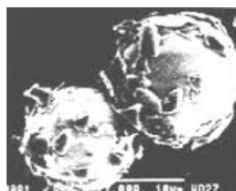
Unlike jagged talc and powders that are ground to size, SAM SFP is made from skin-safe polymer and silica *microspheres*. Microspheres that are actually manufactured this size and shape.



Talcum Powder



Micro Powder



Micro Powder

With 25,400 microns in an inch, Talc particles can be up to 37 microns. SAM SFP particles range less than half that, between 3 - 13 microns. It's so sheer, you'll find a little goes a long way.

Dry, SFP is translucent. Like on dry skin or alcohol based tattoo makeup.

Wetted out with oil from skin, makeup or silicone ... SFP is *transparent*. SFP kills shine *and* DISAPPEARS. No hazy finish.

More paint and surface detail show through.

It can help makeups look like there's no makeup there at all.

Great for closeups. HD will love you.

Powdering silicone with SFP before use helps keep it clean.

It coats the surface and acts as a transparent shield to dirt and dust.

Exhibits ball bearing properties ...

When SFP is the first thing that comes into contact with silicone, it imparts a semi-permanent 'dry slip' quality to the rubber.

It feels and behaves more like powdered skin than rubber.

A glide that remains until abraded off.

Slip that can help silicone slide against itself and other materials.

Like a prosthetic hand sliding into a pocket or sleeve.

SAM SFP scatters light giving an HD friendly 'soft-focus' effect.

A distinctly different look than talc based powders and the dead matte of fumed silica (Cab-o-sil®). If it has too much 'glow' for you simply overpowder with face powder or Cab-O-Sil®. Much of SFP's ball bearing effect will be retained.

Apply with powder brush or puff. Remove excess with moist brush or sponge. Do not breathe dust. Take care around eyes. Cosmetic quality - no residual catalysts. Contains no fumed silica, fragrance, pigments, fillers or parabens.

available from **THE COMPLETE SCULPTOR**, 90 Vandam Street, New York, NY 10013
1-800-9-SCULPT (1-800-972-8597) www.sculpt.com

© 2013 Silicone Art Materials

SAM SFP TECH SHEET 02